

# Eye of the Beholder Quilt Design

original hand and machine applique patterns inspired by the world around us

## \*Prep for Reverse Applique is Fun-Hand: Lily, Rose or Sunflower Workshop

Please be aware that if you are used to doing appliqué, my use of background fabric may “mess with your head”.

In appliqué you sew little design shapes, your top fabrics, onto the background fabric, but most of what you see is the background fabric.

In reverse appliqué, the design is made by the background fabric peeking out through design cut-outs in the top fabric that are sewed to the background fabric, but most of what you see is the top fabric. If you follow the steps and trust the process, it will all work out.

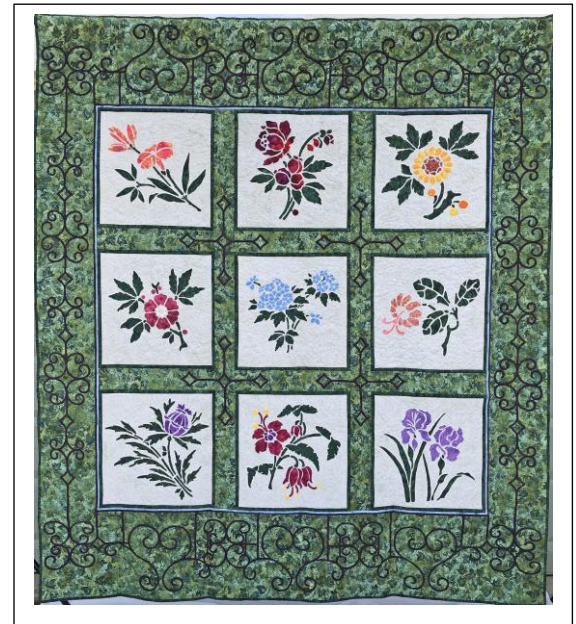
For example, in our *Rose* the *Magenta batik* is the top fabric that is reverse appliquéd onto the *white background fabric*. You do not need to choose the same colors as we did, but use this information as a guide in selecting your own color palette. A strong color or value contrast gives the best results.



- **Purchase pattern prior to class.** Read through the directions for *Reverse Applique by hand: option 1* pages 1 – 3, imagining yourself making the pattern.
- Then read again following the directions for the sections on **Fabric Selection and Preparation** beginning on page 1, and **Pattern Marking steps 1, 2, 3 & 4** under *Reverse Applique by Hand*.
- **Pattern Marking, step 2 - Trace:** When tracing, you need only trace the outline of all **black** and **cross-hatched shapes** on your pattern, but you do not need to trace the actual cross-hatching. You will need a marking pencil that contrasts your background batik, and you may find a Light box helpful to see through your background batik while tracing. Scotch tape is helpful if using a window as a light box.
- If you trace with a frixion gl pen, don't iron your layers together. Just smooth them together.
- Pin your dark top batik with your light/medium background batik together with safety pins so that the right side of the dark top batik is seen on the front, and the tracing on the wrong side of the light/medium background batik is seen on the back.
- Have all items on your supply list handy for class

### Please come to class with:

- Cut 1 – 17 ½" x 17 ½" square, Light batik, Background fabric square with entire *flower* design traced onto the wrong side.
- Cut 1 – 17 ½" x 17 ½" square, Dark batik, Top fabric
- Bring to class all supplies on the supply list



[www.eobquilt.com](http://www.eobquilt.com)  
[https://www.facebook.com/pages/Eye-of-the-Beholder-Quilt-Design/404428092950878?ref=br\\_tf](https://www.facebook.com/pages/Eye-of-the-Beholder-Quilt-Design/404428092950878?ref=br_tf)  
<https://twitter.com/eobquilt>  
<http://www.pinterest.com/eobquilt/design/>  
<http://instagram.com/eobquilt/designs/>